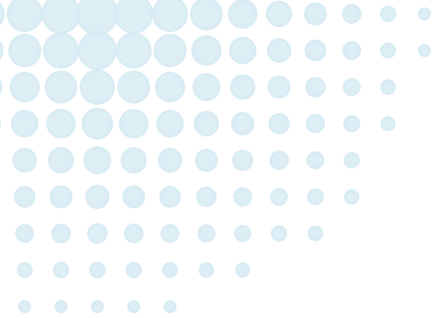
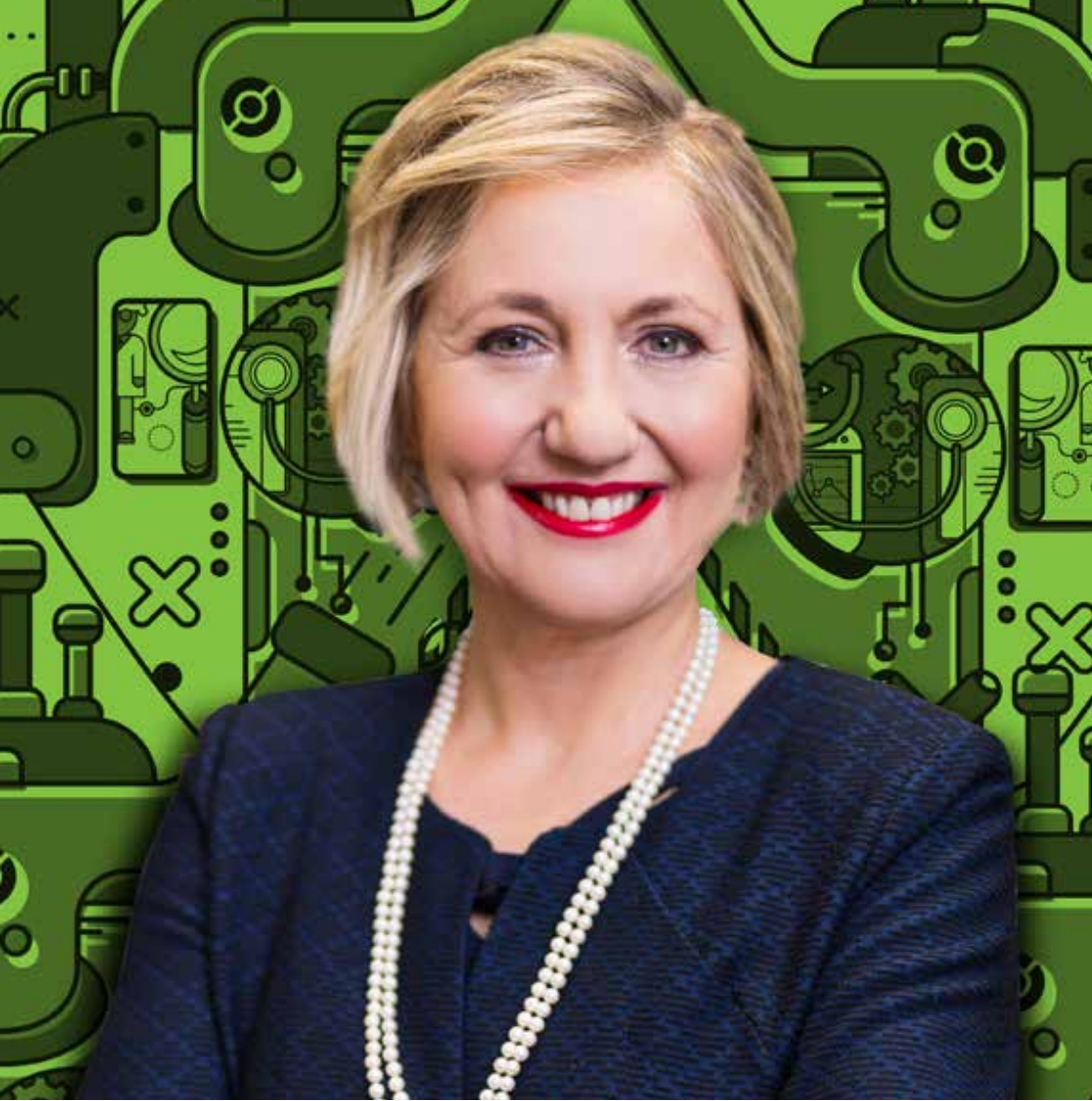


Building a healthy nation through research and innovation



www.samrc.ac.za





“ We have shown **impact in healthcare innovation**, by conducting responsive health research to improve the quality of life of the nation. ”

– PROF GLENDA GRAY, SAMRC PRESIDENT & CEO

VISION

Building a healthy nation through
research and innovation

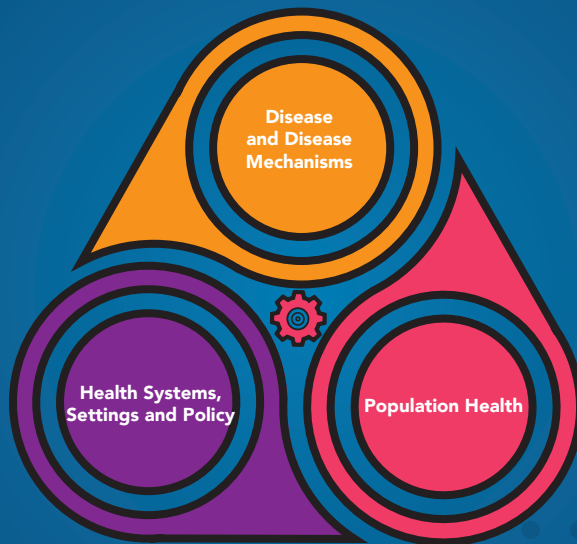
MISSION

To improve the nation's health and quality of life
by conducting and funding relevant and
responsive health research, development,
innovation and research translation

WHO WE ARE

The **South African Medical Research Council (SAMRC)** was established in 1969 with a mandate to improve the health of the country's population, through research, development and technology transfer, for people to enjoy a better quality of life.

Our Focus



We focus on the top ten causes of death and disability and associated risk factors. We assess how healthcare systems function to strengthen health policy, to improve the impact and efficiency of health systems and services, and provide policy makers with the tools for informed healthcare decisions.

RESEARCH PROGRAMMES

The research conducted at the SAMRC is based on six research programmes mandated by the National Department of Health.

THE RESEARCH PROGRAMMES AND ASSOCIATED PURPOSE:



HEALTH PROMOTION AND DISEASE PREVENTION

To conduct research using a life course approach to healthy lifestyles, early diagnosis, and cost effective prevention and management of diseases through health promotion.



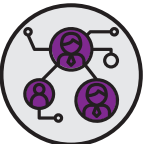
MATERNAL, CHILD AND WOMEN'S HEALTH

To improve the health status and quality of life of women and children through high-quality scientific research that informs policy



HIV, AIDS, TB AND OTHER COMMUNICABLE DISEASES

To conduct research on preventing HIV and related co-morbidities including TB and other infectious diseases such as malaria.



HEALTH SYSTEMS STRENGTHENING

To contribute to health systems strengthening by undertaking systematic reviews, health policy and health systems research to provide evidence for policy-makers, stakeholders and researchers



PUBLIC HEALTH INNOVATION

To promote the improvement of health and quality of life in South Africa through innovation, and technology development transfer.



BIOMEDICAL RESEARCH

To conduct basic research, applied research and transactional research to determine predisposition to disease.

PROGRAMMES & UNITS

INTRAMURAL AND EXTRAMURAL RESEARCH UNITS CONSTITUTE THE SIX RESEARCH PROGRAMMES.

INTRAMURAL RESEARCH UNITS (IRUs) are based at the SAMRC campuses and the scientists are directly employed by the organisation. **EXTRAMURAL RESEARCH UNITS** (ERUs) enable scientists based at tertiary institutions to conduct research funded by the SAMRC. The research programmes and units are specified as follows:

HEALTH PROMOTION AND DISEASE PREVENTION

Alcohol, Tobacco and Other Drug Research Unit (IRU)
SAMRC/UCT Risk and Resilience in Mental Health Disorders Research Unit (ERU)
Non-Communicable Diseases Research Unit (IRU)
Environment and Health Research Unit (IRU)
SAMRC/WITS Rural Public Health and Health Transition Research Unit (ERU)
SAMRC/UNISA Violence, Injury and Peace Research Unit (IRU)
SAMRC/NWU Hypertension and Cardiovascular Disease Research Unit (ERU)
SAMRC/UFH Microbial Water Quality Monitoring Research Unit (ERU)

MATERNAL, CHILD AND WOMEN'S HEALTH

Gender and Health Research Unit (IRU)
SAMRC/UP Maternal and Infant Health Care Strategies Research Unit (ERU)
SAMRC/WITS Development Pathways Research Unit (ERU)
SAMRC/UCT Child and Adolescent Lung Health Research Unit (ERU)

HIV, AIDS, TB AND OTHER COMMUNICABLE DISEASES

HIV Prevention Research Unit (IRU)
Centre for Tuberculosis Research Unit (IRU)
SAMRC/NHLS/UCT Molecular Mycobacteriology Research Unit (ERU)
SAMRC/NHLS/WITS Respiratory and Meningeal Pathogens Research Unit (ERU)
Office of Malaria Research Unit (IRU)
SAMRC/CAPRISA/UKZN HIV-TB Pathogenesis and Treatment Research Unit (ERU)

HEALTH SYSTEMS STRENGTHENING

Burden of Disease Research Unit (IRU)
Biostatistics Research Unit (IRU)
South African Cochrane Centre (IRU)
Health Systems Research Unit (IRU)
SAMRC/UWC Health Services to Systems Research Unit (ERU)

PUBLIC HEALTH INNOVATION

SAMRC/UCT Drug Discovery and Development Research Unit (ERU)
Primate Unit and Delft Animal Centre (IRU)
Biomedical Research and Innovation Platform (IRU)
SAMRC/TUT Herbal Drugs Research Unit (ERU)

BIOMEDICAL RESEARCH

SAMRC/SANBI/UWC Bioinformatics Capacity Development Research Unit (ERU)
SAMRC/UCT Immunology of Infectious Diseases Research Unit (ERU)
SAMRC/UP Stem Cell Research and Therapy Research Unit (ERU)
SAMRC/WITS Antiviral Gene Therapy Research Unit (ERU)



OUR RESEARCH CENTRES

HIV/TB CENTRES

Advancing Care and treatment (ACT) for TB/
HIV

GAVIN CHURCHYARD
gchurchyard@auruminstitute.org

Centre for Tuberculosis Biomarker-Targeted
Intervention

MARK HATHERILL
mark.hatherill@uct.ac.za

Clinical and Community HIV-Tuberculosis
Research Collaborating Centre

GRAEME MEINTJES
graeme.meintjes@uct.ac.za

Centre for Basic and Translational Human TB
Research

ADRIE STEYN
adrie.steyn@k-rith.org

TB Free through Research and Innovation

KEERTAN DHEDA
keertan.dheda@uct.ac.za

Tuberculosis Collaborating Centre for Child
Health (TB-CHILD)

MARK NICOL
mark.nicol@uct.ac.za

Tygerberg SAMRC Collaborating Centre for
HIV Laboratory Research

WOLFGANG PREISER
preiser@sun.ac.za

Soweto Matlosana SAMRC Collaborating
Centre for HIV/AIDS and TB

NEIL MARTINSON
martinson@phru.co.za

Wits Clinical HIV/TB Research Unit, WITS
Health Consortium

IAN SANNE
isanne@witshealth.co.za

Wits RHI Collaborating Centre for HIV/AIDS

HELEN REES
hrees@wrhi.ac.za

MALARIA CENTRES

SAMRC Office of Malaria Research

RAJENDRA MAHARAJ
rajendra.maharaj@mrc.ac.za

University of Cape Town Collaborating Centre
for Optimising Antimalarial Therapy in South
Africa

KAREN BARNES
karen.barnes@uct.ac.za

University of Pretoria Centre for Sustainable
Malaria Control

CHRISTIAAN DE JAGER
tiaan.dejager@up.ac.za

Wits University Collaborating Centre for
Multidisciplinary Research on Malaria

MAUREEN COETZEE
maureen.coetzee@wits.ac.za

CANCER CENTRES

Common Epithelial Cancer Research Centre

PAUL RUFF
paul.ruff@wits.ac.za

Gynaecological Cancer Research Centre

LYNETTE DENNY
lynette.denny@uct.ac.za



ORGANISATIONAL ACHIEVEMENTS & HIGHLIGHTS



SOUND CORPORATE GOVERNANCE



COMPARATIVELY LOW OVERHEADS



STATE-OF-THE-ART LABORATORIES



INTERNATIONALLY RECOGNISED RESEARCHERS



INDEPENDENT ORGANISATION WITH STRONG RELATIONS



LEAD & MANAGE COMPLEX MULTINATIONAL PROJECTS



COLLABORATES WITH GOVERNMENT DEPARTMENTS & OTHER INSTITUTIONS TO:

- invest in the development of new knowledge through innovation and technology
- develop capacity of young black scientists from under-resourced universities
- establish in-house funding that promotes self-initiated research



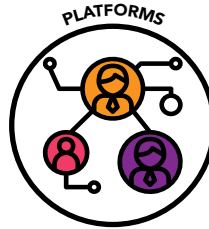
GRANTS, INNOVATION & PRODUCT DEVELOPMENT

Grants, Innovation and Product Development (GIPD) builds research capacity by optimising grant making opportunities to address South Africa's burden of disease through medical diagnostics, treatments and innovations. GIPD forms the South African Medical Research Council's external grant funding mechanism.

Embedded in GIPD is the Strategic

Health Innovation Partnerships (SHIP) programme that is instrumental in catalysing increased investment in innovation and product development-focused programmes and with a major increase at international co-funding.

The role of SHIP is to focus on multi-disciplinary translational research and product development aimed at developing new:



CONTACT: PROFESSOR RICHARD GORDON
EXECUTIVE DIRECTOR
Tel: 021 938 0982
Email: richard.gordon@mrc.ac.za

RESEARCH CAPACITY DEVELOPMENT



To build health research capacity by providing and administering scholarships to students studying towards their Masters and PhDs in medical and health sciences. Health research capacity is augmented by providing funding support to post-doctoral candidates, early career

scientists and mid-career scientists. The Research Capacity Development Division strengthens research capacity in selected South African universities with limited access to resources. Prospective applicants for scholarships are required to be registered for their degrees.

FUNDING CATEGORIES



WHO IS ELIGIBLE TO APPLY

Selected Universities who are resource constrained (historically disadvantaged institutions)

FUNDING MECHANISM

SAMRC Research Strengthening and Capacity Development Funding Opportunity for selected South African Universities

Mid-Career Scientists who are excelling or have the potential to excel in strategic research areas as identified by the SAMRC President

Mid-Career Scientist Programme

MBChBs who are registered for a PhD

SAMRC Clinician Researcher Programme

Early Post-doctoral candidates

SAMRC Career Development Award

Final year PhD candidates

SAMRC Researcher Development Grant

Generic Black candidates with research supervisors who are within SAMRC intra & extra mural research units or are SAMRC Grant holders who are registered for MSc or PhD

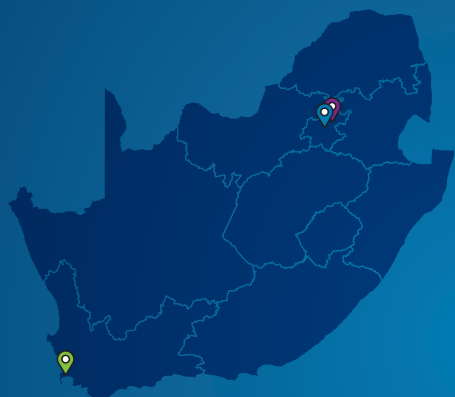
SAMRC Internship Scholarship Programme

South African citizens registered for a MSc and PhD degrees in clinical and / or health sciences

National Health Scholars Programme

CONTACT: Dr Thabi Maitin - Division Manager | Tel: 021 938 0891 | Email: Thabi.Maitin@mrc.ac.za

GENERAL CONTACT DETAILS



SAMRC CAPE TOWN (HEAD OFFICE)

Francie van Zijl Drive, Parow Valley, Cape Town
Tel: 021 938 0911
Email: info@mrc.ac.za

SAMRC PRETORIA

1 Soutpansberg Road, Pretoria
Tel: +27 12 339 8500
Email: info@mrc.ac.za

SAMRC JOHANNESBURG

University of Johannesburg, Cnr Sherwell
and Beit Street Health Clinic Building, 2nd
Floor Doornfontein Campus, Doornfontein,
Johannesburg
Tel: 072 762 3548
Email: angie.mathee@mrc.ac.za

SAMRC DURBAN

491 Peter Mokaba Ridge Road, Overport,
Durban
Tel: +27 31 203 4700
Email: info@mrc.ac.za

SAMRC Westville, 123 Jan Hofmeyer Road,
Westville 3630, Durban
Tel: +27 31 242 3600
Email: info@mrc.ac.za

www.samrc.ac.za

ALFRED THUTLOA

Head: Corporate & Marketing
Communications
Tel: +27 21 938 0274
Email: alfred.thutloa@mrc.ac.za

SARAH BOK

Executive Manager: Strategic Monitoring
Compliance & Government Liaison
Tel: 021 938 0623
Email: sarah.bok@mrc.ac.za