

Figures and Tables

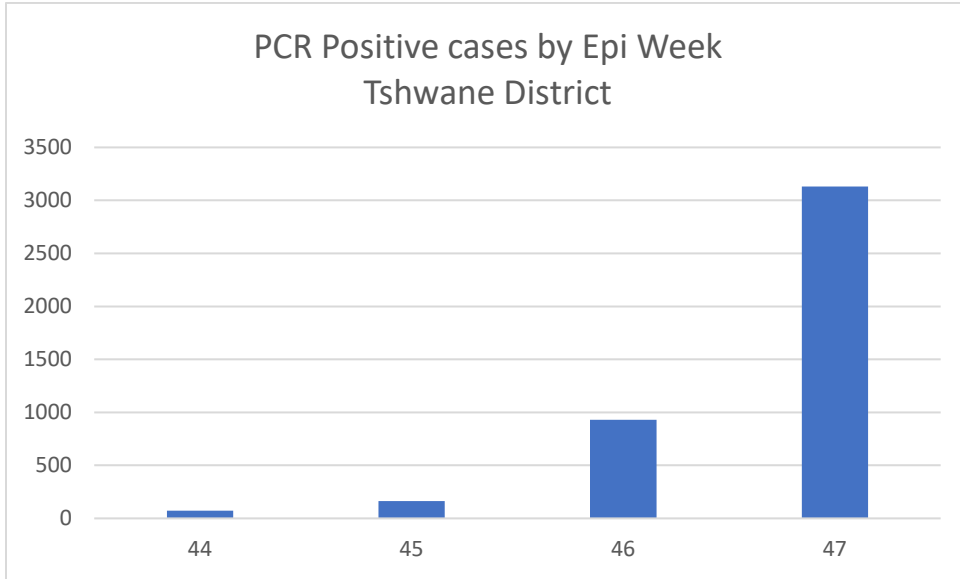


Figure 1. Weekly SARS-CoV-2, Tshwane District (NICD)

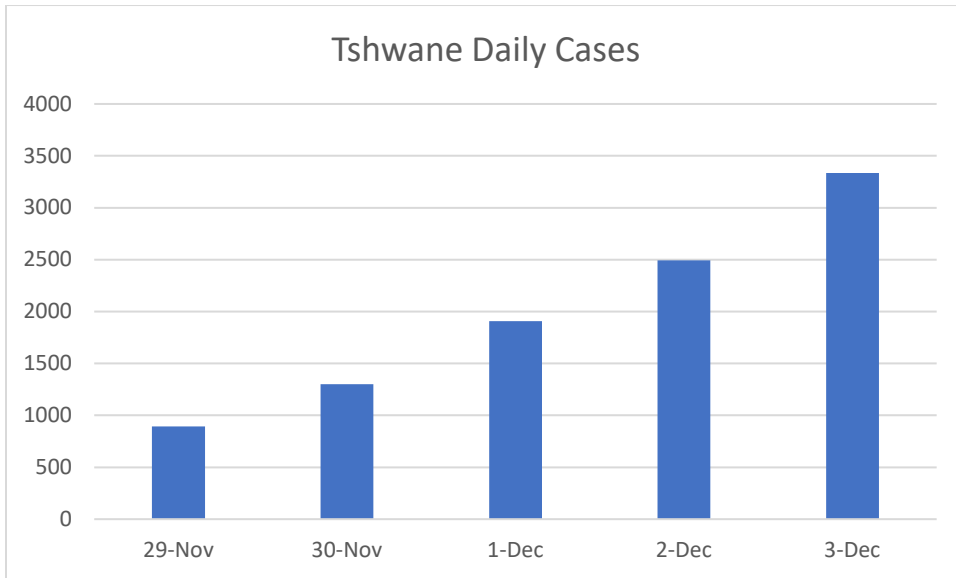


Figure 2. Daily New SARS-CoV-2 Cases Tshwane District (sacoronavirus.co.za)

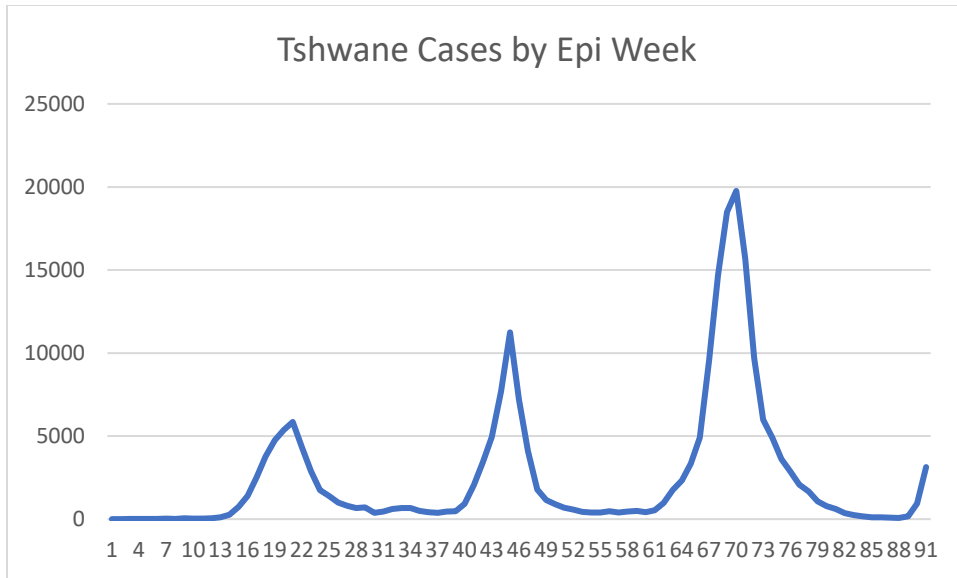


Figure 3. Weekly New SARS-Co-V-2 Cases By Epi Week Across 4 Waves

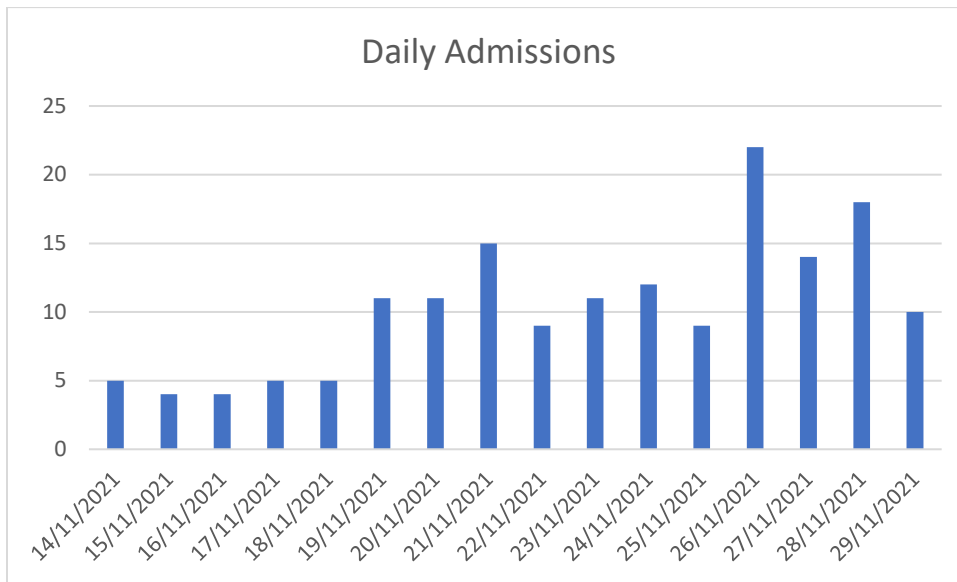


Figure 4. Daily Admissions Last Two Weeks Steve Biko/Tshwane District Hospitals (DATCOV)

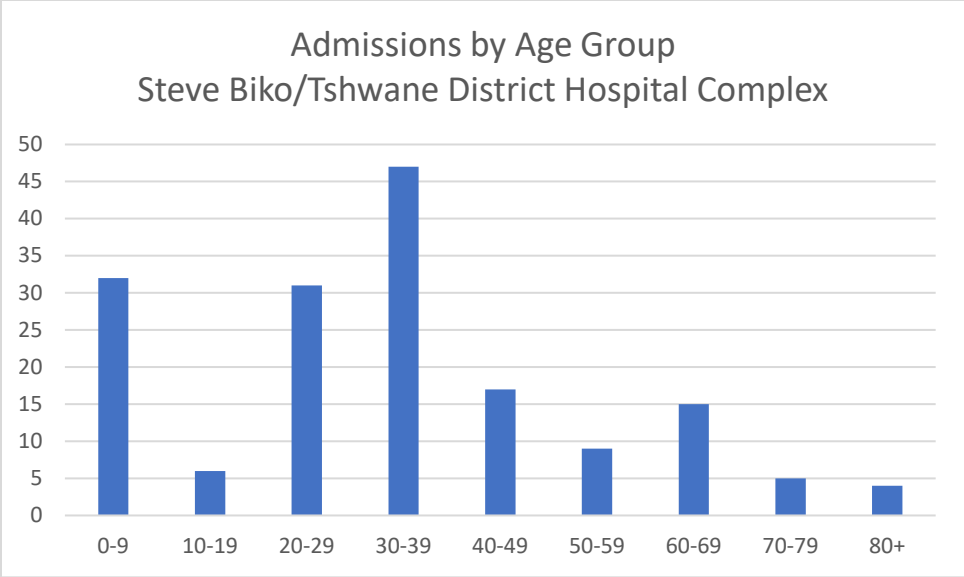


Figure 5. COVID-19 Admissions Last Two Weeks Steve Biko/Tshwane District Hospital Complex By Age Group (DATCOV)

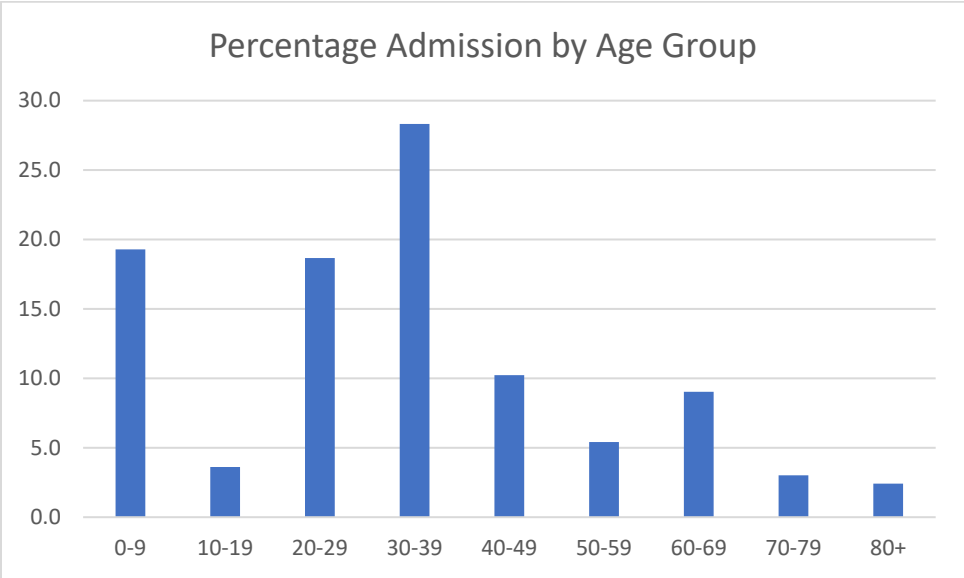


Figure 6. Percent COVID-19 Admissions by Age Group Last Two Weeks (DATCOV)

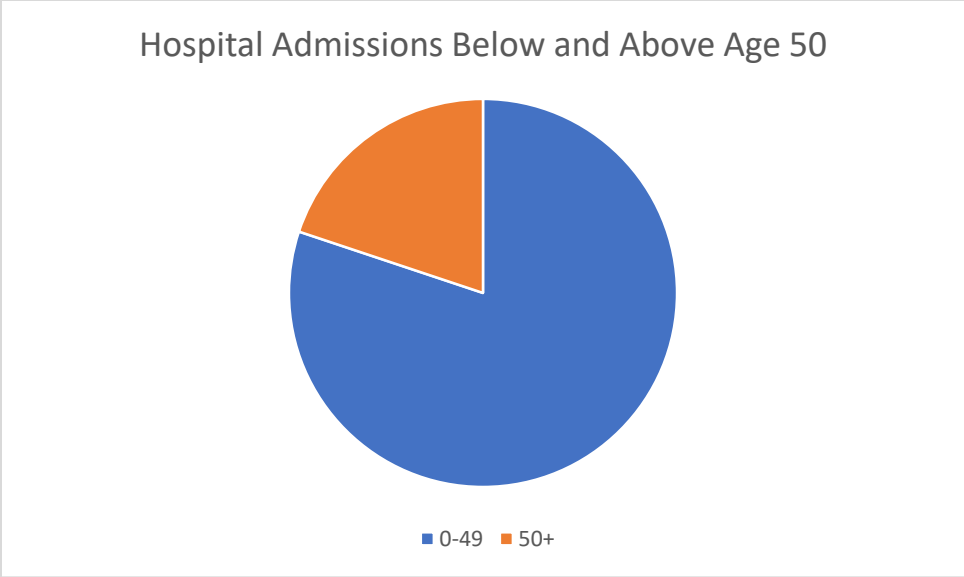


Figure 7. Breakdown of Admissions By Age Last Two Weeks (DATCOV)

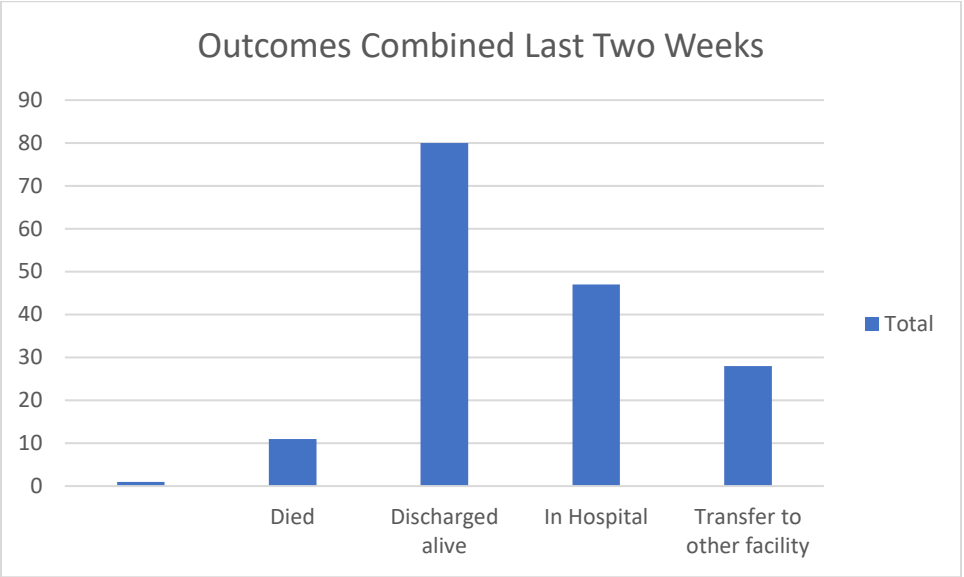


Figure 8. COVID-19 Patient Outcomes Last Two Weeks (DATCOV) (error total deaths =10)

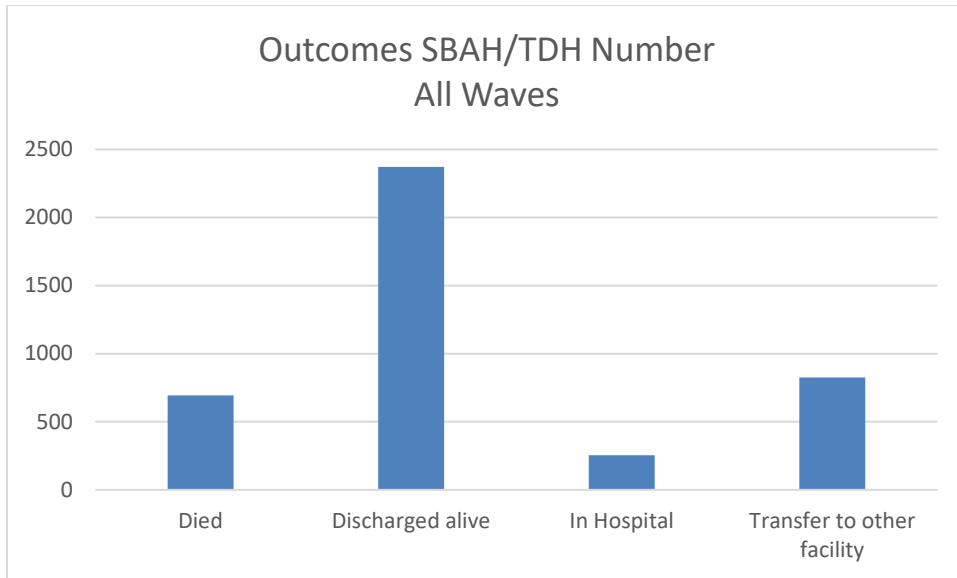


Figure 9. COVID-19 Patient Outcomes Steve Biko/Tshwane District Hospital Complex (DATCOV)

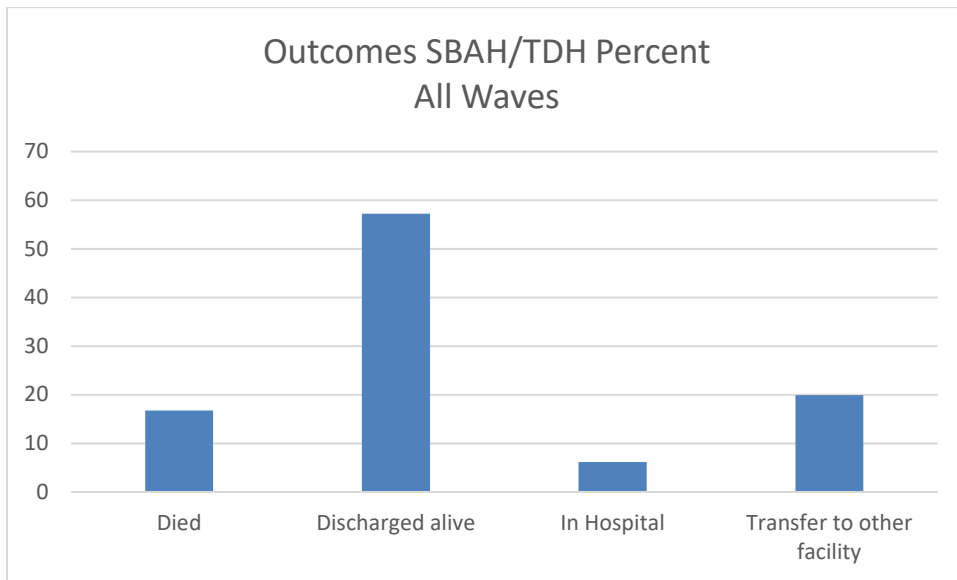


Figure 10. COVID-19 Patient Outcomes Percent Steve Biko/Tshwane District Hospital Complex (DATCOV)

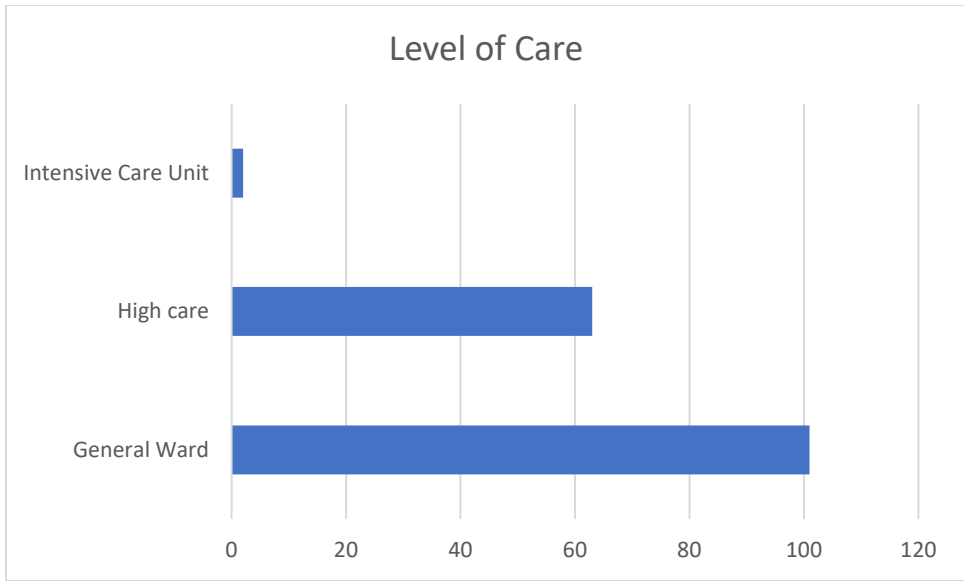


Figure 11. COVID-19 Admissions Last Two Weeks Levels of Care

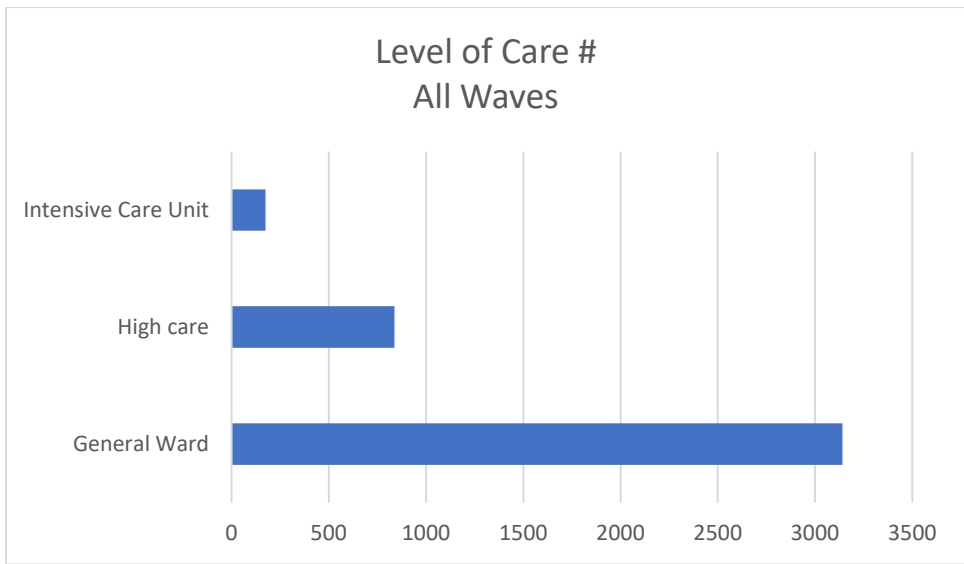


Figure 12. COVID-19 Admissions Levels of Care All Waves

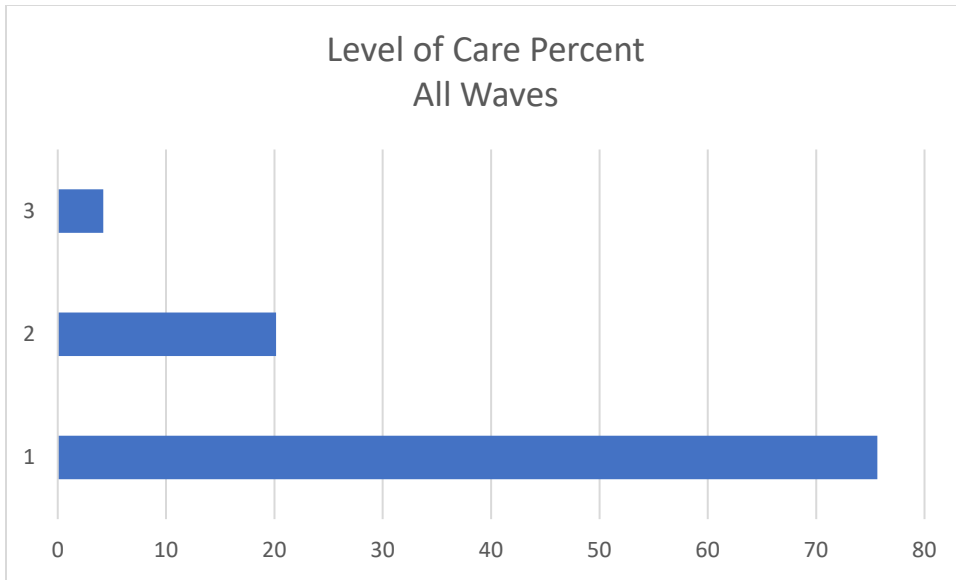


Figure 13. COVID-19 Admissions Levels of Care All Waves

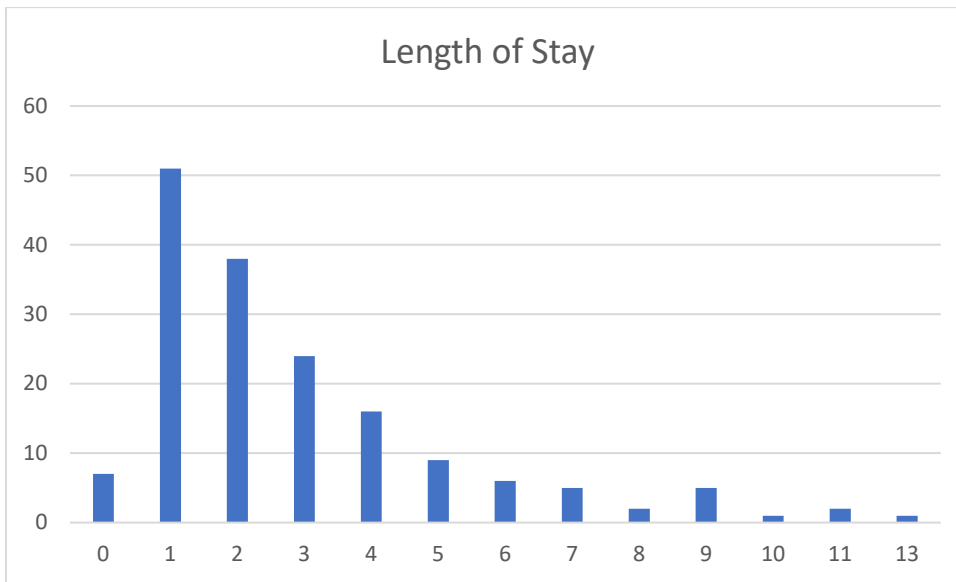


Figure 14. COVID Admissions Length of Stay Last Two Weeks

Snapshot of the Day 2 December 2021

Ward Type	Patients #	On Room Air
Ward 1 Male	17 (4 on oxygen)	13
Ward 3 Female	16 (5 on oxygen)	11
Stoltz HC	4 (3 on NIV)	1
Stoltz ICU	1 (intubated)	0
Stoltz Paeds	4 (1 on HFNO)	3
Totals	42	28 (66%)
Patients on Oxygen	14 (33%)	
Patients on oxygen for COVID	9 (21%)	

Table 1. Summary Patient Profile

Vaccination Status

Ward	vaccinated	Unvaccinated	Unknown
Ward 1	2	13	2
Ward 3	3	8	5
Stoltz High Care	1	3	0
Stoltz ICU	0	0	1
Stoltz Paeds	N/A	N/A	N/A
Totals	6	24	8
On oxygen	2	10	2

On Oxygen	Vaccinated	Unvaccinated	Unknown
Ward 1	1	3	0
Ward 3	0	4	1
Stoltz ICU	0	0	1
Stoltz High Care	0	3	0
Stoltz Paeds	0	1	0