

“ We have shown **impact in healthcare innovation**, by conducting responsive health research to improve the quality of life of the nation. ”

– PROF GLENDA GRAY, SAMRC PRESIDENT & CEO

# VISION

Building a healthy nation through  
research, innovation and  
transformation

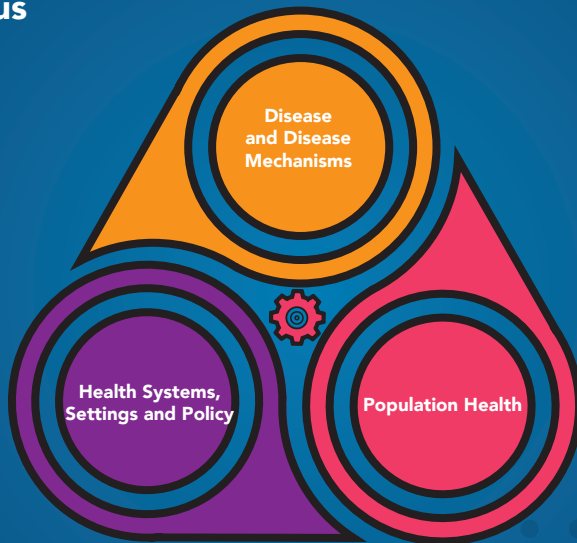
# MISSION

To advance the nation's health and quality of  
life and address inequity by conducting and  
funding relevant and responsive health  
research, capacity development, innovation  
and research translation

# WHO WE ARE

The **South African Medical Research Council (SAMRC)** was established in 1969 with a mandate to improve the health of the country's population, through research, development and technology transfer, so that people can enjoy a better quality of life.

## Our Focus



We focus on the top ten causes of death and disability and associated risk factors. We assess how healthcare systems function to strengthen health policy, to improve the impact and efficiency of health systems and services, and provide policy makers with the tools for informed healthcare decisions.

# RESEARCH PROGRAMMES

The research conducted at the SAMRC is based on six research programmes mandated by the National Department of Health.

## THE RESEARCH PROGRAMMES AND ASSOCIATED PURPOSE:



### HEALTH PROMOTION AND DISEASE PREVENTION

To conduct research using a life course approach to healthy lifestyles, early diagnosis, and cost effective prevention and management of diseases through health promotion.



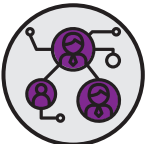
### MATERNAL, CHILD AND WOMEN'S HEALTH

To improve the health status and quality of life of women and children through high-quality scientific research that informs policy



### HIV, AIDS, TB AND OTHER COMMUNICABLE DISEASES

To conduct research on preventing HIV and related co-morbidities including TB and other infectious diseases such as malaria.



### HEALTH SYSTEMS STRENGTHENING

To contribute to health systems strengthening by undertaking systematic reviews, health policy and health systems research to provide evidence for policy-makers, stakeholders and researchers



### PUBLIC HEALTH INNOVATION

To promote the improvement of health and quality of life in South Africa through innovation, and technology development transfer.



### BIOMEDICAL RESEARCH

To conduct basic research, applied research and transactional research to determine predisposition to disease.

# PROGRAMMES & UNITS

INTRAMURAL AND EXTRAMURAL RESEARCH UNITS CONSTITUTE THE SIX RESEARCH PROGRAMMES.

**INTRAMURAL RESEARCH UNITS** (IRUs) are based at the SAMRC campuses and the scientists are directly employed by the organisation. **EXTRAMURAL RESEARCH UNITS** (ERUs) enable scientists based at tertiary institutions to conduct research funded by the SAMRC. The research programmes and units are specified as follows:

## HEALTH PROMOTION AND DISEASE PREVENTION

Alcohol, Tobacco and Other Drug Research Unit (IRU)  
SAMRC/UCT Risk and Resilience in Mental Health Disorders Research Unit (ERU)  
Non-Communicable Diseases Research Unit (IRU)  
Environment and Health Research Unit (IRU)  
SAMRC/WITS Rural Public Health and Health Transition Research Unit (ERU)  
SAMRC/UNISA Violence, Injury and Peace Research Unit (IRU)  
SAMRC/NWU Hypertension and Cardiovascular Disease Research Unit (ERU)  
SAMRC/UFH Microbial Water Quality Monitoring Research Unit (ERU)

## MATERNAL, CHILD AND WOMEN'S HEALTH

Gender and Health Research Unit (IRU)  
SAMRC/UP Maternal and Infant Health Care Strategies Research Unit (ERU)  
SAMRC/WITS Development Pathways Research Unit (ERU)  
SAMRC/UCT Child and Adolescent Lung Health Research Unit (ERU)

## HIV, AIDS, TB AND OTHER COMMUNICABLE DISEASES

HIV Prevention Research Unit (IRU)  
Centre for Tuberculosis Research Unit (IRU)  
SAMRC/NHLS/UCT Molecular Mycobacteriology Research Unit (ERU)  
SAMRC/NHLS/WITS Respiratory and Meningeal Pathogens Research Unit (ERU)  
Office of Malaria Research Unit (IRU)  
SAMRC/CAPRISA/UKZN HIV-TB Pathogenesis and Treatment Research Unit (ERU)

## HEALTH SYSTEMS STRENGTHENING

Burden of Disease Research Unit (IRU)  
Biostatistics Research Unit (IRU)  
South African Cochrane Centre (IRU)  
Health Systems Research Unit (IRU)  
SAMRC/UWC Health Services to Systems Research Unit (ERU)

## PUBLIC HEALTH INNOVATION

SAMRC/UCT Drug Discovery and Development Research Unit (ERU)  
Primate Unit and Delft Animal Centre (IRU)  
Biomedical Research and Innovation Platform (IRU)  
SAMRC/TUT Herbal Drugs Research Unit (ERU)

## BIOMEDICAL RESEARCH

SAMRC/SANBI/UWC Bioinformatics Capacity Development Research Unit (ERU)  
SAMRC/UCT Immunology of Infectious Diseases Research Unit (ERU)  
SAMRC/UP Stem Cell Research and Therapy Research Unit (ERU)  
SAMRC/WITS Antiviral Gene Therapy Research Unit (ERU)



# OUR RESEARCH CENTRES

## HIV/TB CENTRES

Advancing Care and treatment (ACT) for TB/  
HIV

**GAVIN CHURCHYARD**  
[gchurchyard@auruminstitute.org](mailto:gchurchyard@auruminstitute.org)

Centre for Tuberculosis Biomarker-Targeted  
Intervention

**MARK HATHERILL**  
[mark.hatherill@uct.ac.za](mailto:mark.hatherill@uct.ac.za)

Clinical and Community HIV-Tuberculosis  
Research Collaborating Centre

**GRAEME MEINTJES**  
[graeme.meintjes@uct.ac.za](mailto:graeme.meintjes@uct.ac.za)

Centre for Basic and Translational Human TB  
Research

**ADRIE STEYN**  
[adrie.steyn@k-rith.org](mailto:adrie.steyn@k-rith.org)

TB Free through Research and Innovation

**KEERTAN DHEDA**  
[keertan.dheda@uct.ac.za](mailto:keertan.dheda@uct.ac.za)

Tuberculosis Collaborating Centre for Child  
Health (TB-CHILD)

**MARK NICOL**  
[mark.nicol@uct.ac.za](mailto:mark.nicol@uct.ac.za)

Tygerberg SAMRC Collaborating Centre for  
HIV Laboratory Research

**WOLFGANG PREISER**  
[preiser@sun.ac.za](mailto:preiser@sun.ac.za)

Soweto Matlosana SAMRC Collaborating  
Centre for HIV/AIDS and TB

**NEIL MARTINSON**  
[martinson@phru.co.za](mailto:martinson@phru.co.za)

Wits Clinical HIV/TB Research Unit, WITS  
Health Consortium

**IAN SANNE**  
[isanne@witshealth.co.za](mailto:isanne@witshealth.co.za)

Wits RHI Collaborating Centre for HIV/AIDS

**HELEN REES**  
[hrees@wrhi.ac.za](mailto:hrees@wrhi.ac.za)

## MALARIA CENTRES

SAMRC Office of Malaria Research

**RAJENDRA MAHARAJ**  
[rajendra.maharaj@mrc.ac.za](mailto:rajendra.maharaj@mrc.ac.za)

University of Cape Town Collaborating Centre  
for Optimising Antimalarial Therapy in South  
Africa

**KAREN BARNES**  
[karen.barnes@uct.ac.za](mailto:karen.barnes@uct.ac.za)

University of Pretoria Centre for Sustainable  
Malaria Control

**CHRISTIAAN DE JAGER**  
[tiaan.dejager@up.ac.za](mailto:tiaan.dejager@up.ac.za)

Wits University Collaborating Centre for  
Multidisciplinary Research on Malaria

**MAUREEN COETZEE**  
[maureen.coetzee@wits.ac.za](mailto:maureen.coetzee@wits.ac.za)

## CANCER CENTRES

Common Epithelial Cancer Research Centre

**PAUL RUFF**  
[paul.ruff@wits.ac.za](mailto:paul.ruff@wits.ac.za)

Gynaecological Cancer Research Centre

**LYNETTE DENNY**  
[lynette.denny@uct.ac.za](mailto:lynette.denny@uct.ac.za)





# ORGANISATIONAL ACHIEVEMENTS & HIGHLIGHTS



**SOUND CORPORATE GOVERNANCE**



**COMPARATIVELY LOW OVERHEADS**



**STATE-OF-THE-ART LABORATORIES**



**INTERNATIONALLY RECOGNISED RESEARCHERS**



**INDEPENDENT ORGANISATION WITH STRONG RELATIONS**



**LEAD & MANAGE COMPLEX MULTINATIONAL PROJECTS**



**COLLABORATES WITH GOVERNMENT DEPARTMENTS & OTHER INSTITUTIONS TO:**

- invest in the development of new knowledge through innovation and technology
- develop capacity of young black scientists from under-resourced universities
- establish in-house funding that promotes self-initiated research



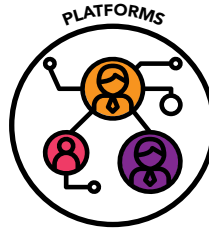
# GRANTS, INNOVATION & PRODUCT DEVELOPMENT

Grants, Innovation and Product Development (GIPD) builds research capacity by optimising grant making opportunities to address South Africa's burden of disease through medical diagnostics, treatments and innovations. GIPD forms the South African Medical Research Council's external grant funding mechanism.

Embedded in GIPD is the Strategic

Health Innovation Partnerships (SHIP) programme that is instrumental in catalysing increased investment in innovation and product development-focused programmes and with a major increase at international co-funding.

The role of SHIP is to focus on multi-disciplinary translational research and product development aimed at developing new:



**CONTACT:** DR MICHELLE MULDER  
EXECUTIVE DIRECTOR  
Tel: 021 938 0937  
Email: [michelle.mulder@mrc.ac.za](mailto:michelle.mulder@mrc.ac.za)

# RESEARCH CAPACITY DEVELOPMENT



To build health research capacity by providing and administering scholarships to students studying towards their Masters and PhDs in medical and health sciences. Health research capacity is augmented by providing funding support to post-doctoral candidates, early career

scientists and mid-career scientists. The Research Capacity Development Division strengthens research capacity in selected South African universities with limited access to resources. Prospective applicants for scholarships are required to be registered for their degrees.

## FUNDING CATEGORIES



### WHO IS ELIGIBLE TO APPLY

**Selected Universities who are resource constrained (historically disadvantaged institutions)**

**Mid-Career Scientists who are excelling or have the potential to excel in strategic research areas as identified by the SAMRC President**

**MBChBs who are registered for a PhD**

**Early Post-doctoral candidates**

**Final year PhD candidates**

**Generic Black candidates with research supervisors who are within SAMRC intra & extra mural research units or are SAMRC Grant holders who are registered for MSc or PhD**

**South African citizens registered for a MSc and PhD degrees in clinical and / or health sciences**

### FUNDING MECHANISM

SAMRC Research Strengthening and Capacity Development Funding Opportunity for selected South African Universities

Mid-Career Scientist Programme

SAMRC Clinician Researcher Programme

SAMRC Career Development Award

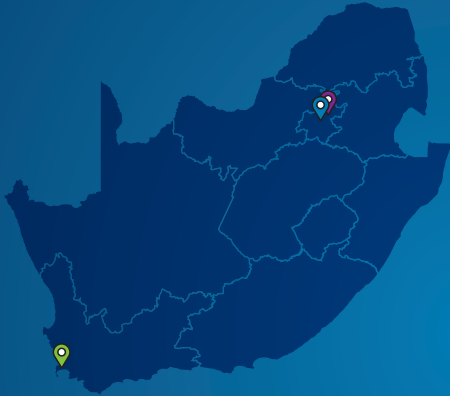
SAMRC Researcher Development Grant

SAMRC Internship Scholarship Programme

National Health Scholars Programme

**CONTACT:** Dr Thabi Maitin - Division Manager | Tel: 021 938 0891 | Email: Thabi.Maitin@mrc.ac.za

# GENERAL CONTACT DETAILS



 **SAMRC CAPE TOWN  
(HEAD OFFICE)**


Francie van Zijl Drive, Parow Valley, Cape Town  
Tel: 021 938 0911  
Email: [info@mrc.ac.za](mailto:info@mrc.ac.za)

 **SAMRC PRETORIA**

1 Soutpansberg Road, Pretoria  
Tel: +27 12 339 8500  
Email: [info@mrc.ac.za](mailto:info@mrc.ac.za)


**SAMRC JOHANNESBURG**

University of Johannesburg, Cnr Sherwell  
and Beit Street Health Clinic Building, 2nd  
Floor Doornfontein Campus, Doornfontein,  
Johannesburg

 Tel: +27 12 3398539  
Email: [info@mrc.ac.za](mailto:info@mrc.ac.za)

**SAMRC DURBAN**

491 Peter Mokaba Ridge Road, Overport,

 Durban  
Tel: +27 31 203 4700  
Email: [info@mrc.ac.za](mailto:info@mrc.ac.za)

[www.samrc.ac.za](http://www.samrc.ac.za)

**ALFRED THUTLOA**

Head: Corporate & Marketing  
Communications  
Tel: +27 21 938 0274  
Email: [alfred.thutloa@mrc.ac.za](mailto:alfred.thutloa@mrc.ac.za)

**SARAH BOK**

Executive Manager: Strategic Monitoring  
Compliance & Government Liaison  
Tel: 021 938 0623  
Email: [sarah.bok@mrc.ac.za](mailto:sarah.bok@mrc.ac.za)