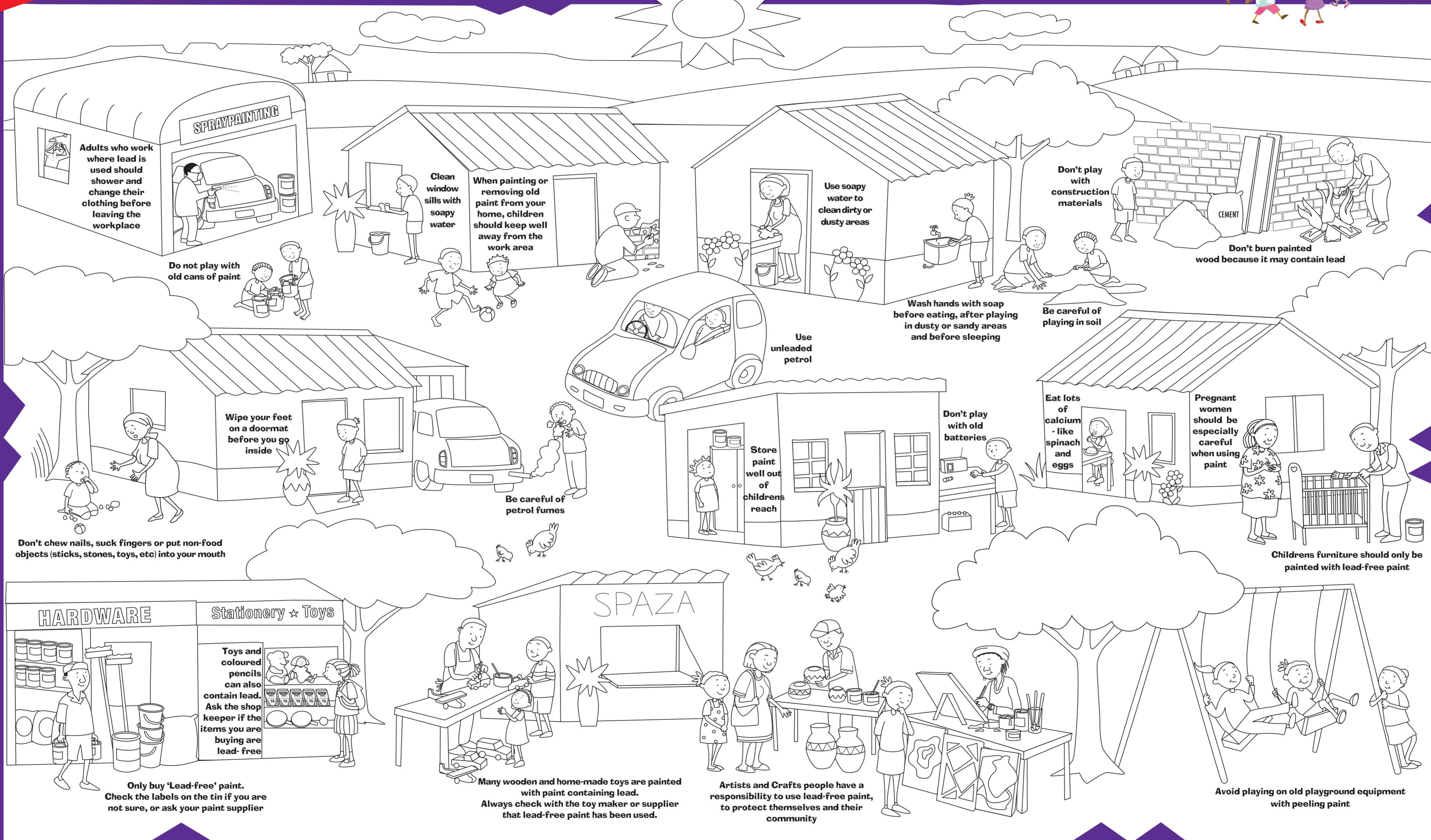


Prevent, Protect, Educate

Lead Poisoning

Colour-in this picture with your friends, and learn about the dangers of Lead Poisoning



Adults who work where lead is used should shower and change their clothing before leaving the workplace

Do not play with old cans of paint

Clean window sills with soapy water

When painting or removing old paint from your home, children should keep well away from the work area

Use soapy water to clean dirty or dusty areas

Don't play with construction materials

Don't burn painted wood because it may contain lead

Wash hands with soap before eating, after playing in dusty or sandy areas and before sleeping

Be careful of playing in soil

Use unleaded petrol

Wipe your feet on a doormat before you go inside

Be careful of petrol fumes

Store paint well out of childrens reach

Don't play with old batteries

Eat lots of calcium-like spinach and eggs

Pregnant women should be especially careful when using paint

Don't chew nails, suck fingers or put non-food objects (sticks, stones, toys, etc) into your mouth

Childrens furniture should only be painted with lead-free paint

HARDWARE

Stationery ★ Toys

Toys and coloured pencils can also contain lead. Ask the shopkeeper if the items you are buying are lead-free

Only buy 'Lead-free' paint. Check the labels on the tin if you are not sure, or ask your paint supplier

Many wooden and home-made toys are painted with paint containing lead. Always check with the toy maker or supplier that lead-free paint has been used.

Artists and Crafts people have a responsibility to use lead-free paint, to protect themselves and their community

Avoid playing on old playground equipment with peeling paint



Field Testing Version