

CONTACT DETAILS

Cape Town

Francie van Zijl Drive, Parow Valley, Cape Town;
PO Box 19070, Tygerberg, 7505, South Africa;

Durban

491 Peter Mokaba Ridge, Overport, Durban, 4001,
South Africa;



Andre Kengne, MD, DSCS, PhD

Director

Tel: +27 21 938 0841

E-mail: andre.kengne@mrc.ac.za

Research focus: Cardiovascular and metabolic diseases epidemiology and prevention.



Paul van Jaarsveld, BSc, BScHons (Biochemistry), MSc (Biochemistry), PhD (Biochemistry)

Senior Specialist Scientist

Tel: +27 21 938 0261

E-mail: paul.vanjaarsveld@mrc.ac.za

Research focus: Essential fatty acid status in relation to lipid profile and anthropometric status over a wide range of dietary intake.



Nasheeta Peer, MBChB (Natal), MBA (UCT), MPH (UCT), PhD (UCT) - Durban

Senior Specialist Scientist

Tel: +27 31 203 4882

E-mail: nasheeta.peer@mrc.ac.za

Research focus: Cardiovascular disease and diabetes epidemiology, and health systems research.



Zandile Mchiza, BSc (Nutrition and Dietetics), PhD

Senior Specialist Scientist

Tel: +27 21 938 0673

E-mail: Zandile.Mchiza@mrc.ac.za

Research focus: Epidemiology of non-communicable diseases and priority nutrition-related paediatric cardiometabolic disorders



Jillian Hill, B.Psych, MPH, PhD (Public Health)

Specialist Scientist

Tel: +27 21 938 0811

E-mail: jillian.hill@mrc.ac.za

Research focus: Food Environment, Healthy Lifestyles and NCD Prevention. Her interests lies in community participatory research and project evaluation.



Perpetua Modjadji, BSc (Medical. Sciences), MSc (Med Sci.), PhD (Med Sci.), DrPH (Public Health)

Specialist Scientist

Tel: +27 21 938 0210

E-mail: Perpetua.modjadji@mrc.ac.za

Research focus: Childhood malnutrition, maternal nutrition, multimorbidity, uncontrolled and management of diabetes and hypertension, and inflammatory markers



Cindy George, BSc (Human Life Sciences); BMedScHons; MScMedSc; PhD (Medical Physiology)

Senior Scientist

Tel: +27 21 938 0842

E-mail: cindy.george@mrc.ac.za

Research focus: Epidemiology of the major non-communicable diseases in Africa, with particular interest in chronic kidney disease.



Tshephang Mashiane, BSc, BScHons(Physiology), MSc(Physiology)
Scientist

Tel: +27 21 938 0675

E-mail: Tshephang.Mashiane@mrc.ac.za

Research focus: COVID-19; non-communicable diseases; healthcare workers; health policymakers and co-morbid non-communicable disease



Kim Nguyen, MD, MPhil (Maternal and Child Health), PhD
Post-Doctoral Fellow

Tel: +27 21 938 0422

E-mail: kim.nguyen@mrc.ac.za

Research focus: Non-communicable and cardiometabolic diseases epidemiology, prevention and control.



Unati Nqebelele, MBChB, FCP(SA), Cert Nephrology, MMed, PhD
Nephrologist and Post-Doctoral Fellow

Tel: +27 21 938 0805

E-mail: Unati.Nqebelele@mrc.ac.za

Research focus: chronic kidney disease, genetics of kidney disease, acute kidney injury, diabetes mellitus, hypertension, Africa



Johanna van Wyk
Research Technologist

Tel: +27 21 938 0409

E-mail: Johanna.van.wyk@mrc.ac.za or jvwyk@mrc.ac.za

Research focus: Lipid and fatty acid analysis in different sample matrixes. Student training in lipid extraction and fatty acid analysis. Research support to internal scientist in different projects.



Deborah Jonathan

Chief Research Nurse

Tel: +27 21 938 0802

E-mail: deborah.jonathan@mrc.ac.za



Erica April

Senior Research Technician

Tel: +27 21 938 0839

E-mail: erica.april@mrc.ac.za



Tania Witbooi

Senior Officer

Tel: +27 21 938 0805

E-mail: tania.witbooi@mrc.ac.za

Students



Samukelisiwe Madlala

Project title: Dietary diversity and its association with nutritional status of adults at risk of diabetes and the nutrient density and cost of foods.

NCDRU supervisors: Prof Mieke Faber and Dr Jillian Hill



Tatum Lopes

Project title: Plant-based diet in relation to cardiometabolic risk profile in Africa

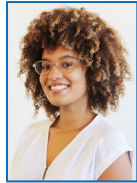
NCDRU supervisor: Prof Andre P. Kengne



Chad Africa

Project title: The correlates of sedentary behaviour among adults at high-risk of developing type two diabetes mellitus in Cape Town, South Africa.

NCDRU supervisors: Dr Jillian Hill, Dr Cindy George



Dezlynn Jansen

Project title: The development of a food guide for pre-diabetic consumers in lower socio-economic communities in the City of Cape Town, South Africa, using community-based participatory research (CBPR)

NCDRU supervisors: Dr Jillian Hill



Leegan Govender

Project title: Determining the role of differential expression of candidate microRNAs in cardiometabolic diseases among South African adults living with HIV

NCDRU supervisors: Prof Nasheeta Peer and Prof Andre P Kengne



Annalie Wentzel

Project title: Metabolic syndrome risk assessment among adolescents in Cape Town, South Africa: the suitability of the current anthropometrical indices and cut-off points

NCDRU supervisors: Prof Zandile Mchiza

Fieldwork and Laboratory staff



Tshavhuyo Mulabisano

Fieldworker



Angelo Gertse

Fieldworker



Phumza Shobi

Fieldworker



Miseka Ramncwana
Fieldworker



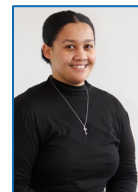
Andiswa Tono
Fieldworker



Sinabo Nyumbeka
Laboratory Assistant



Veliswa Nohiya
Research Nurse



Laurentia-Joan Opperman
Intern
