



SOUTH AFRICAN MEDICAL RESEARCH COUNCIL

# BUILDING A HEALTHY NATION THROUGH RESEARCH, INNOVATION AND TRANSFORMATION



The SAMRC, through its innovative and responsive research, **continues to influence the country's health policy** and supports the National Department of Health's mandate to improve the quality of life for all South Africans.

**PROF NTOBEKO NTUSI, SAMRC PRESIDENT & CEO**



# WHO WE ARE

The South African Medical Research Council (SAMRC) was established in 1969 with a mandate to improve the health of the country's population, through research, development and technology transfer, so that people can enjoy a better quality of life.



## Our vision

Building a healthy nation through research, innovation and transformation.



## Our mission

To advance the nation's health and quality of life and address inequity by conducting and funding relevant and responsive health research, capacity development, innovation and research translation.



## Our focus

We focus on the top ten causes of death and disability and associated risk factors. We assess how healthcare systems function to strengthen health policy, to improve the impact and efficiency of health systems and services, and provide policy makers with the tools for informed healthcare decisions.



# RESEARCH PROGRAMMES

The research conducted at the SAMRC is based on six research programmes mandated by the National Department of Health.

Intramural and extramural research units constitute the six research programmes. **INTRAMURAL RESEARCH UNITS** (IRUS) are based at the SAMRC campuses and the scientists are directly employed by the organisation. **EXTRAMURAL RESEARCH UNITS** (ERUS) enable scientists based at tertiary institutions to conduct research funded by the SAMRC. The research programmes and units are specified as follows:

## The research programmes and associated purpose:



### HEALTH PROMOTION AND DISEASE PREVENTION

To conduct research using a life course approach to healthy lifestyles, early diagnosis, and cost effective prevention and management of diseases through health promotion.



### MATERNAL, CHILD AND WOMEN'S HEALTH

To improve the health status and quality of life of women and children through high-quality scientific research that informs policy.



### HIV, AIDS, TB AND OTHER COMMUNICABLE DISEASES

To conduct research on preventing HIV and related co-morbidities including TB and other infectious diseases such as malaria.



### HEALTH SYSTEMS STRENGTHENING

To contribute to health systems strengthening by undertaking systematic reviews, health policy and health systems research to provide evidence for policy-makers, stakeholders and researchers.



### PUBLIC HEALTH INNOVATION

To promote the improvement of health and quality of life in South Africa through innovation, and technology development transfer.



### BIOMEDICAL RESEARCH

To conduct basic research, applied research and transactional research to determine predisposition to disease.

## Programmes and units

<ul style="list-style-type: none"><li>• Antimicrobial Resistance and Global Health Research Unit (ERU)</li><li>• Centre for Health Economics and Decision Science Research Unit (ERU)</li><li>• Environment and Health Research Unit (IRU)</li><li>• Hypertension and Cardiovascular Disease Research Unit (ERU)</li></ul>	<ul style="list-style-type: none"><li>• Mental Health, Alcohol, Substance Use and Tobacco Research Unit (IRU)</li><li>• Microbial Water Quality Monitoring Research Unit (ERU)</li><li>• Non-Communicable Diseases Research Unit (IRU)</li></ul>	<ul style="list-style-type: none"><li>• Risk and Resilience in Mental Disorders Research Unit (ERU)</li><li>• Rural Public Health and Health Transition Research Unit (ERU)</li><li>• Violence, Injury and Social Asymmetries Research Unit (ERU)</li></ul>
<ul style="list-style-type: none"><li>• Child and Adolescent Lung Health Research Unit (ERU)</li></ul>	<ul style="list-style-type: none"><li>• Development Pathways for Health Research Unit (ERU)</li></ul>	<ul style="list-style-type: none"><li>• Gender and Health Research Unit (IRU)</li></ul>
<ul style="list-style-type: none"><li>• Antibody Immunity Research Unit (ERU)</li><li>• Centre for the Study of Antimicrobial Resistance Research Unit (ERU)</li><li>• Centre for Tuberculosis Research Unit (IRU)</li></ul>	<ul style="list-style-type: none"><li>• HIV and other infections Diseases Research Unit (IRU)</li><li>• HIV-TB Pathogens and Treatment Research Unit (ERU)</li><li>• Intersection of Non-communicable Disease and Infectious Disease Research Unit (ERU)</li></ul>	<ul style="list-style-type: none"><li>• Malaria Research Group (IRU)</li><li>• Office of AIDS and TB Research (IRU)</li><li>• Vaccine and Infectious Diseases Analytics Research Unit (ERU)</li></ul>
<ul style="list-style-type: none"><li>• Biostatistics Research Unit (IRU)</li><li>• Burden of Disease Research Unit (IRU)</li></ul>	<ul style="list-style-type: none"><li>• Cochrane South Africa (IRU)</li><li>• Health Services to Systems Research Unit (ERU)</li></ul>	<ul style="list-style-type: none"><li>• Health Systems Research Unit (IRU)</li></ul>
<ul style="list-style-type: none"><li>• Biomedical Research and Innovation Platform (IRU)</li><li>• Drug Discovery and Development Research Unit (ERU)</li></ul>	<ul style="list-style-type: none"><li>• Genomics Platform (IRU)</li><li>• Herbal Drugs Research Unit (ERU)</li></ul>	<ul style="list-style-type: none"><li>• Pan African Centre for Epidemics Research Unit (ERU)</li><li>• Primate Unit and Delft Animal Centre (IRU)</li></ul>
<ul style="list-style-type: none"><li>• Antiviral Gene Therapy Research Unit (ERU)</li><li>• Cardiometabolic Health Research Unit (ERU)</li><li>• Genomics of Brain Disorders Research Unit (ERU)</li></ul>	<ul style="list-style-type: none"><li>• Platform for Pharmacogenomics Research and Translation Research Unit (ERU)</li><li>• Precision and Genomic Medicine Research Unit (ERU)</li><li>• Precision Oncology Research Unit (ERU)</li></ul>	<ul style="list-style-type: none"><li>• Stem Cell Research and Therapy Unit (ERU)</li><li>• Wound and Keloid Scarring Translational Research Unit (ERU)</li></ul>

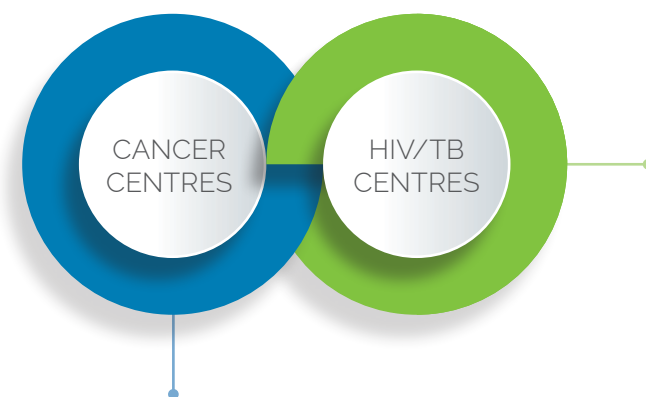
# CENTRE AND PLATFORMS OFFICE

The SAMRC's Centre and Platforms Office (CAPO) provides strategic leadership to the Biomedical Research and Innovation Platform, Genomics Platform, Primate Unit and Delft Animal Centre, and Malaria Research Group, and ensures that the business of the Centre and Platforms is aligned to strategic partnerships and innovative research projects.

**Senior Platform Director**  
Prof Johan Louw  
johan.louw@mrc.ac.za



# RESEARCH CENTRES



Common Epithelial Cancer  
Gynaecological Cancer

Advancing Care and Treatment  
Tuberculosis Biomarker-Targeted Intervention  
Clinical and Community HIV-Tuberculosis  
Basic and Translational Human TB  
TB Free through Research and Innovation

Child Health (TB-CHILD)  
HIV Laboratory Research  
Centre for HIV/AIDS and TB  
Wits Clinical HIV/TB Research Unit, WITS Health Consortium  
Wits RHI Collaborating Centre for HIV/AIDS

# ORGANISATIONAL STRENGTHS



**SOUND CORPORATE GOVERNANCE**



**COMPARATIVELY LOW OVERHEADS**



**STATE-OF-THE-ART LABORATORIES**



**INTERNATIONALLY RECOGNISED RESEARCHERS**



**INDEPENDENT ORGANISATION WITH STRONG RELATIONS**



**LEAD & MANAGE COMPLEX MULTINATIONAL PROJECTS**



**COLLABORATES WITH GOVERNMENT DEPARTMENTS & OTHER INSTITUTIONS**

# GRANTS, INNOVATION AND PRODUCT DEVELOPMENT

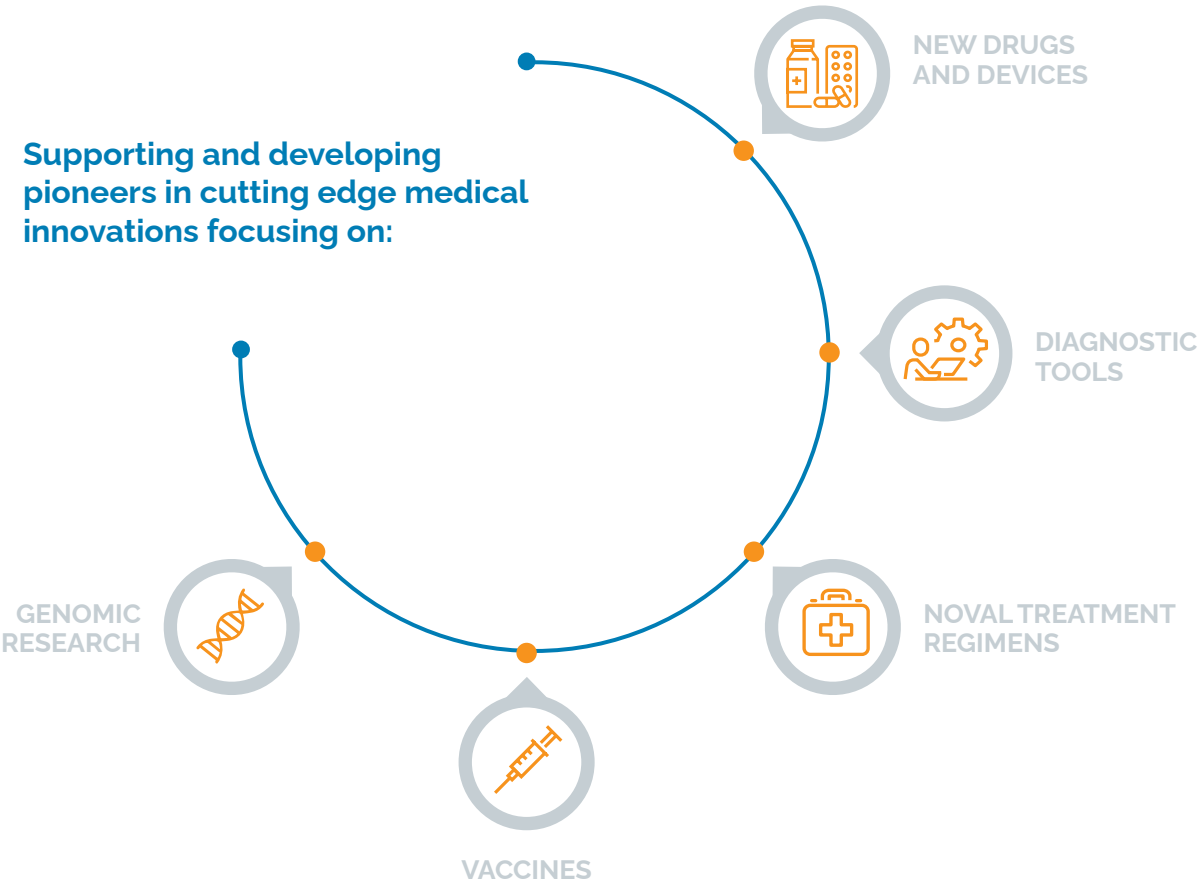
The Grants, Innovation and Product Development (GIPD) Unit at the SAMRC is the custodian of grant funding innovation for the SAMRC and is a significant contributor to all 5 of the strategic goals of the SAMRC.

The SAMRC's strategic goal 3, which is focussed on supporting innovation and technology development to improve health, is an important priority that falls within GIPD. The unit manages funding aimed specifically at product development and innovation and hosts the

SAMRC's Technology Transfer Office (TTO), the Global Health Innovation Accelerator (GHIA) and the Medical Device and Diagnostic Innovation Cluster (MeDDIC), all of which provide innovation support to protect and advance technologies towards commercialised products. GIPD also manages the SAMRC-Jembi Collaborating Centre for Digital Health Innovation, aimed at expanding the SAMRC's footprint in digital health research and

innovation. These innovation support mechanisms also contribute to strategic goal 5 to translate new knowledge for improved health through the delivery of novel health technologies.

CONTACT:  
**DR MICHELLE MULDER**  
 Executive Director  
 Tel: 021 938 0937  
 Email: michelle.mulder@mrc.ac.za



# RESEARCH CAPACITY DEVELOPMENT

Building capacity for the long-term sustainability of health research, while simultaneously attaining health research transformation, is a priority for the SAMRC. These are key responsibilities of the SAMRC's Research Capacity Development (RCD) division, which provides funding for the next generation of health researchers through a variety of scholarships and research

grants aimed at early- and mid-career scientists at South African universities.

RCD also contributes to the SAMRC's other strategic goals of administering health research effectively and efficiently, leading the generation of new knowledge, and supporting innovation and technology development.

CONTACT:  
**DR FREDERIC NDUHIRABANDI**  
 RCD Grants & Fellowships Programmes  
 Frederic.Nduhirabandi@mrc.ac.za  
 Tel: +27 21 938 0461

**DR LINDOKUHLE NDLANDLA**  
 Postgraduate/Scholarships Programmes  
 Lindokuhle.Ndlandla@mrc.ac.za  
 Tel: +27 21 938 0442

## FUNDING CATEGORIES

### WHO IS ELIGIBLE TO APPLY

Selected Universities who are resource constrained (historically disadvantaged institutions)

Mid-Career Scientists who are excelling or have the potential to excel in strategic research areas as identified by the SAMRC President

MBChBs who are registered for a PhD

Early Post-doctoral candidates

Final year PhD candidates

Generic Black candidates with research supervisors who are within SAMRC intra & extra mural research units or are SAMRC Grant holders who are registered for MSc or PhD

South African citizens registered for a MSc and PhD degrees in clinical and/or health sciences

### FUNDING MECHANISM

SAMRC Research Strengthening and Capacity Development Funding Opportunity for selected South African Universities

Mid-Career Scientist Programme

SAMRC Clinician Researcher Programme

SAMRC Career Development Award

SAMRC Researcher Development Grant

SAMRC Internship Scholarship Programme

National Health Scholars Programme



## GENERAL CONTACT DETAILS

### DEPUTY INFORMATION OFFICERS

Dr Seeiso Koali  
Research Integrity Office  
Email: [Seeiso.Koali@mrc.ac.za](mailto:Seeiso.Koali@mrc.ac.za)

Ms Nobubele Tandwa  
Knowledge and Information  
Management Services  
Email: [nobubele.tandwa@mrc.ac.za](mailto:nobubele.tandwa@mrc.ac.za)

### SAMRC CAPE TOWN (HEAD OFFICE)

Francie van Zijl Drive, Parow Valley,  
Cape Town  
Tel: 021 938 0911  
Email: [info@mrc.ac.za](mailto:info@mrc.ac.za)

### SAMRC PRETORIA

1 Soutpansberg Road,  
Pretoria  
Tel: +27 12 339 8500  
Email: [info@mrc.ac.za](mailto:info@mrc.ac.za)

### SAMRC JOHANNESBURG

University of Johannesburg, Cnr Sherwell  
and Beit Street Health Clinic Building,  
2nd Floor Doornfontein Campus, Doornfontein,  
Johannesburg  
Tel: +27 12 3398539  
Email: [info@mrc.ac.za](mailto:info@mrc.ac.za)

### SAMRC DURBAN

491 Peter Mokaba Ridge Road,  
Overport, Durban  
Tel: +27 31 203 4700  
Email: [info@mrc.ac.za](mailto:info@mrc.ac.za)